

Accreditation:

The Indiana University School of Medicine is accredited by the Accreditation Council for Continuing Medical Education to provide continuing medical education for physicians.

Credit:

The Indiana University School of Medicine designates this educational activity for a maximum of 25 hours in Category 1 and 15 hours in Category 2 credit per week towards the AMA Physician's Recognition Award. Each physician should claim only those hours of credit that he/she actually spent in the educational activity.

Disclosure:

All faculty participating in Continuing Medical Education activities sponsored by the Indiana University School of Medicine are expected to disclose to the program audience any real or apparent conflict of interest related to the content of their presentations.

Fee & Attendance:

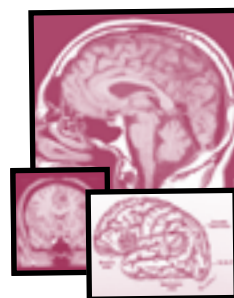
In order to optimize the teaching exposure and experience, this fellowship is limited to two participants per week. The tuition for this fellowship has been established at \$1,500 for the first week and \$1,000 for the 2nd week of Imaging Fellowships and \$1,750 for the first week and \$1,250 for the 2nd week of Interventional Fellowships. Those interested in fellowships lasting more than 2 weeks or for fellowships combining imaging and intervention should contact Annette Douglas-Akinwande, M.D., at (317)274-8832 or andougla@iupui.edu.

Location information:

Indiana University Hospital, Riley Children's Hospital, Wishard Memorial Hospital, Methodist Hospital, and the Roudebush VA on the Indiana University School of Medicine's campus. Also, Johnson County Memorial Hospital, Clarian West, and Open-Sided MRI

Accommodations:

Discounted rate rooms are available at the University Place - Doubletree Hotel across the street from University Hospital. Reservations can be made by phoning (317)269-9000 or (800)627-2700. Several other hotels are also available nearby in downtown Indianapolis.



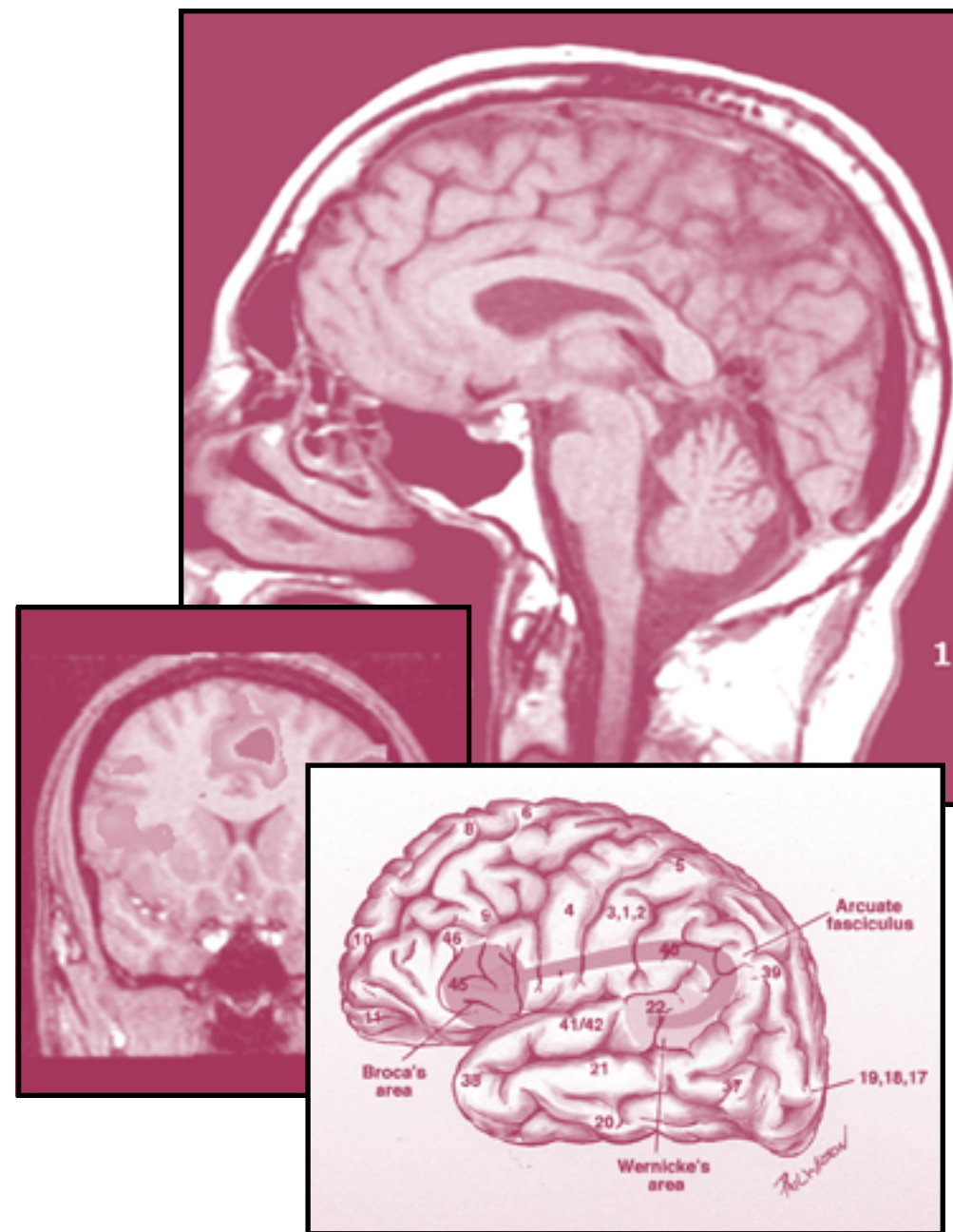
Non-Profit Org.
U.S. Postage
PAID
Indianapolis, IN
Permit No. 4245

Neuroradiology Visiting Fellowships
Department of Radiology
Indiana University School of Medicine
Indiana University Hospital
550 North University Boulevard, Room 0279
Indianapolis, Indiana 46202



Address Service Requested

**Indiana University School of Medicine
Department of Radiology**



*Neuroradiology
Visiting Fellowships*

The Indiana University School of Medicine's Department of Radiology offers individualized five- to twenty-day visiting fellowships. This exciting fellowship opportunity offers exposure to a wide-range of diagnostic studies and interventional procedures currently being performed at Indiana University. Clinical case discussion; observation of cases being performed; technical and clinical discussions with the faculty as well as formal and informal lectures are just some of the activities available as part of your individualized Neuroradiology visiting fellowship.

The Neuroradiology Section at Indiana University performs and interprets CT and MRI studies of the brain, spine, head and neck using spiral CT (dual 4, 10, 16, and 64 channel scanners), echoplanar MRI (1.5 and 3 Tesla) and open bore (.7 Tesla) MRI instruments. State of the art diagnostic procedures are performed, including CT angiography, gadolinium enhanced MR angiography, diffusion imaging, perfusion imaging, MR spectroscopy, and functional MRI. The visiting fellow will observe and participate in protocol development, performance monitoring and interpretation of these clinical studies.

Interventional studies performed by the Neuroradiology Section include myelography, fluoroscopically guided spinal punctures, carotid and cerebral angiography, and both conventional and fluoroscopic CT guided biopsies of the spine, head and neck.

The diverse populations served by the Department of Radiology and the Neuroradiology Section practices at several affiliated sites including Indiana University Hospital, Methodist Hospital, Riley Children's Hospital, Wishard Memorial Hospital, Richard Roudebush Veteran's Administration Hospital, Johnson County Memorial Hospital, Clarian West, Beltway services and Open-sided MRI, offer the visiting fellow the opportunity to further tailor a fellowship program featuring clinical experience that will meet their particular needs. In particular, Neuroradiology Visiting Fellowships can be developed that are dedicated to pediatric neuroradiology, head and neck radiology and functional neuroimaging.

Neuroradiology Faculty

Eric Awwad, M.D., Professor of Clinical Radiology

Maria Dolar, M.D., Assistant Professor of Radiology

Annette Douglas-Akinwande, M.D., Assistant Professor of Radiology
Program Director, Neuroradiology Fellowship

Mary Edwards-Brown, M.D., Professor of Radiology

Anna Illner, M.D., Assistant Professor of Radiology

Annette Johnson, M.D., Assistant Professor of Radiology
Section Chief, Neuroradiology

Andrew Kalnin, M.D., Associate Professor of Radiology

Kristine Mosier, D.M.D., Ph.D., Assistant Professor of Radiology

Juan Tejada, M.D., Assistant Professor of Radiology

Weekly Visiting Fellowship Schedule

Monday

8:00 – 12:00 Attend clinical case review or interventional procedure
12:00 – 1:00 Lunch
1:00 – 5:00 Attend clinical case review or interventional procedure

Tuesday

8:00 – 12:00 Attend clinical case review or interventional procedure
12:00 – 1:00 Lunch
1:00 – 5:00 Attend clinical case review or interventional procedure

Wednesday

8:00 – 9:00 Pediatric Neuroradiology Conference (RI classroom)
9:00 – 12:00 Attend clinical case review or interventional procedure
12:00 – 1:00 Neuropathology Conference (Medical Science autopsy)
1:00 – 2:00 Lunch
2:30 – 5:00 Attend clinical case review or interventional procedure

Thursday

8:00-12:00 Attend clinical case review or interventional procedure
12:00 – 1:00 Neurology Grand Rounds (Fesler, Hurty C)
1:00 – 2:00 Lunch
2:00 – 5:00 Attend clinical case review or interventional procedure

Friday

7:00-8:00 Didactic Neuroradiology Lecture (RI Classroom)
8:00-9:00 Neuroradiology case conference (RI Classroom)
9:00 – 12:00 Attend clinical case review or interventional procedure
12:00 – 1:00 Stroke Conference (Fesler, Hurty C)
1:00 – 2:00 Lunch
2:00 – 5:00 Attend clinical case review or interventional procedure

Other non-weekly conferences include the following:

Other conferences that are not weekly include the following:

1st Wednesday, 7:00 – 8:00 Skull Base Conference
(UH Outpatient Ctr, 2nd Floor classroom)
2nd Wednesday, 7:00 - 8:00 ENT Radiology Didactic Lectures
(Riley ENT Conference Room)
3rd Wednesday, 7:00 – 8:00 ENT Conference
(UH Outpatient Ctr, 2nd floor classroom)
? Wednesday 5:00 - 6:00 Clinicoradiologic - Pathologic Correlation (Fesler Hall)

IU School of Medicine Department of Radiology Neuroradiology Visiting Fellowship Registration Form

Week Preferred: _____

Start Date _____ End Date _____

Name: _____

First _____ M.I. _____ Last _____

Degree (Please circle): M.D. D.O. Other: _____

Business Address:

Street: _____

City: _____ State : _____ Zipcode: _____

Country: _____

Daytime Phone: _____ Fax: _____

Hospital Affiliation: _____ City, State: _____

Specialty: _____

License Number: _____ State/Country: _____

Payment Method:

Participants will be billed by the department after receiving confirmation of their scheduled Neuroradiology Visiting Fellowship from the department.

Send Registration & Billing Information to:

Annette Douglas-Akinwande, M.D.
Program Director, Neuroradiology Fellowship
Department of Radiology
Indiana University Hospital, Room 0279
550 North University Boulevard
Indianapolis, Indiana 46202-5253
Phone: (317)274-8832 or Fax: (317)274-1848
andougla@iupui.edu • www.indyrad.iupui.edu

