



About the Fellowship

A new five-day Visiting Fellowship is being offered by the Section of Interventional Radiology of the Department of Radiology at Indiana University School of Medicine. The program offers exposure to a wide range of vascular diagnostic/interventional as well as non-vascular interventional procedures performed by this section. Case

observation; clinical case discussions; daily inpatient rounds; technical and clinical discussions with the faculty as well as formal and informal lectures are some of the activities available during the Visiting Fellowship.

The Section of Interventional Radiology provides services at five hospitals on the IUPUI campus. The facilities include twelve angiographic suites, five with newly installed, state-of-the-art equipment. In excess of 10,000 procedures are performed annually; these encompass a wide range of vascular and non-vascular procedures, including, but not limited to:

- Arterial (including carotid) & venous intervention
- Renal & hepatic transplant interventions
- CT/US guided drainage procedures
- Gastroenteric access for nutrition
- Genitourinary intervention
- Hemodialysis access management
- Treatment of vascular malformations
- Management of portal hypertension & its complications
- Pediatric intervention
- Biliary intervention
- Stent-grafts
- Temporary & long term central venous access
- Thrombolysis
- Tumor chemoembolization
- Magnetic resonance arteriography & venography

Physicians in the Section of Interventional Radiology conduct a variety of research projects, including clinical trials involving stent-grafts and dialysis-related interventions, giving participants the opportunity to observe cutting edge procedures before their widespread use. In addition to our daily clinical conferences and patient rounds, the Visiting Fellows are encouraged and invited to participate in interdisciplinary clinical conferences with referring clinical services.



Interventional Radiology Faculty

Matthew S. Johnson, M.D., Associate Professor of Radiology
Director, Section of Vascular Interventional Radiology

Jan Namyslowski, M.D., Associate Professor of Clinical Radiology
Director, Interventional Radiology Visiting Fellowship

Himanshu Shah, M.D., Associate Professor of Clinical Radiology
Radiology Chief, Wishard Memorial Hospital

David Agarwal, M.D., Assistant Professor of Radiology
Director, Interventional Radiology Fellowship Program

Sabah Butty, M.D., Assistant Professor of Clinical Radiology

Thomas Casciani, M.D., Assistant Professor of Radiology

Geoffrey Jones, M.D., Assistant Professor of Radiology

Francis Marshall, M.D., Assistant Professor of Radiology

Gordon McLennan, M.D., Assistant Professor of Radiology
Director, Interventional Radiology Research Laboratory

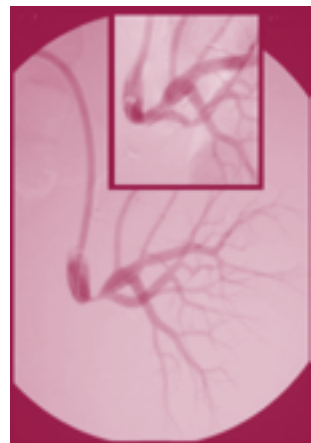
Interventional Radiology Visiting Fellowships
Department of Radiology
Indiana University School of Medicine
Indiana University Hospital
550 North University Boulevard, Room 0279
Indianapolis, Indiana 46202

Address Service Requested

Indiana University School of Medicine Department of Radiology



Interventional Radiology Visiting Fellowships

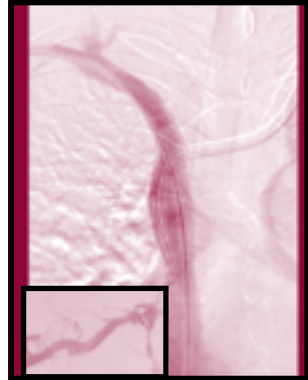
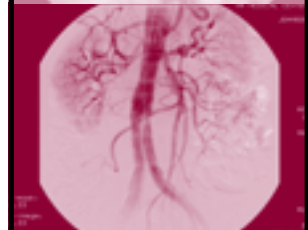
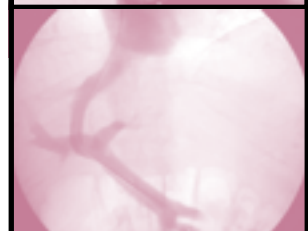
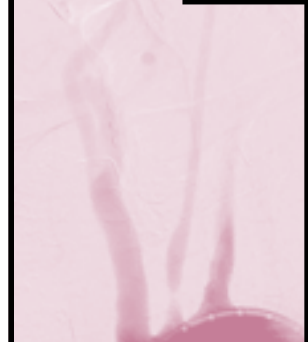
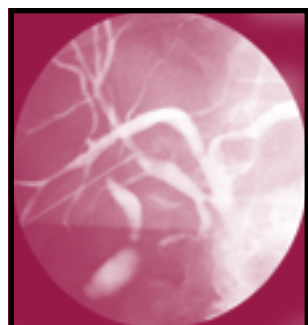
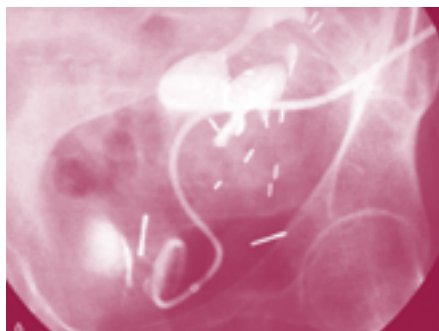


Fellowship Objectives

At the conclusion of this program, participants should be able to:

- Discuss indications, contraindications and technical aspects of arterial and venous interventions, including angioplasty, thrombolysis and stent placement as well as management of complications
- Discuss complex biliary and genitourinary interventions; imaging guidance; clinical indications and technical aspects of these procedures

- Discuss the principles of management of failing and thrombosed dialysis access conduit
- Explain the role of CT/US guidance in drainage procedures
- Be familiar with gastroenteric access placement techniques
- Discuss MRA/MRV imaging protocols and image interpretation
- Discuss the basics of stent-graft placement techniques
- Discuss the clinical and technical aspects of managing portal hypertension and its complications; be familiar with TIPS technique in normal and complex anatomy; discuss the management of TIPS-related complications
- Discuss specifics of a variety of pediatric interventions
- Understand the technique of image-guided central venous access in simple and complex anatomy and discuss the principles of an all-inclusive catheter management service
- Be familiar with the indications for and techniques of percutaneous tumor ablation
- Discuss the indications, contraindications, technical aspects and complications of percutaneous treatment of vascular malformations
- Discuss the role of the Physician Assistant in Interventional Radiology



Visiting Fellowship Schedule

Monday

7:00 - 8 am Didactic lecture
 8:00 - 9 am Daily Case Conference; in-patient rounds
 9:00 - 12 pm Case observation; clinical/technical discussions
 12:00 - 1pm Lunch
 1:00 - 4pm Case observation; clinical/technical discussions

Tuesday

7:00 - 8am Daily Case Conference; in-patient rounds
 8 - 12:30pm Case observation; clinical/technical discussions
 12:30 - 1:30pm Lunch
 1:30 - 2:30pm Clinical Multi-disciplinary Conference
 2:30 - 4:30pm Case observation; clinical/technical discussion

Wednesday

7:00 - 8am Daily Case Conference; in-patient rounds
 8:00 - 12pm Case observation; clinical/technical discussions
 12:00 - 1pm Lunch
 1:00 - 4pm Case observation; clinical/technical discussions

Thursday

7:00 - 8am Clinical Multi-disciplinary Conference
 8:00 - 9am Daily Case Conference; in-patient rounds
 9:00 - 1pm Case observation; clinical/technical discussions
 1:00 - 2pm Lunch
 2:00 - 4pm Case observation; clinical/technical discussions

Friday

7:00 - 8am Clinical Multi-disciplinary Conference
 8:00 - 9am Daily Case Conference; in-patient rounds
 9:00 - 1pm Case observation; clinical/technical discussions
 1:00 - 2pm Lunch
 2:00 - 4pm Case observation; clinical/technical discussions

Payment Method:

Participants will be billed by the department after receiving confirmation of their scheduled Interventional Radiology Visiting Fellowship from the department.

Send Registration & Billing Information to:

Kathleen Pedersen
 Department of Radiology
 Indiana University Hospital, Room 0279
 550 North University Boulevard
 Indianapolis, Indiana 46202-5253
 Phone: (317)274-1840 or Fax: (317)278-7793
 kmpeders@iupui.edu • www.indyrad.iupui.edu

Accreditation: The Indiana University School of Medicine is accredited by the Accreditation Council for Continuing Medical Education to provide continuing medical education for physicians.

Credit: The Indiana University School of Medicine designates this educational activity for a maximum of 40 hours per week in Category I credit towards the AMA Physician's Recognition Award. Each physician should claim only those hours of credit that he/she actually spent in the educational activity.

Disclosure: All faculty participating in Continuing Medical Education activities sponsored by the Indiana University School of Medicine are expected to disclose to the program audience any real or apparent conflict of interest related to the content of their presentations.

Fee & Attendance: In order to optimize the teaching exposure and experience, this fellowship is limited to two participants per week. The tuition for this fellowship has been established at \$1,000 per week. For further information, contact Jan Namyslowski, M.D., at (317)274-1840 or jnamyslo@iupui.edu.

Location information: Indiana University Hospital, Riley Children's Hospital, Wishard Memorial Hospital and the Roudebush VA Medical Center on the Indiana University School of Medicine's campus.

Accommodations: Discounted rate rooms are available at the University Place - Doubletree Hotel across the street from Indiana University Hospital. Reservations can be made by phoning (317)269-9000 or (800)627-2700. Several other hotels are also available nearby in downtown Indianapolis.

IU School of Medicine Department of Radiology Interventional Visiting Fellowship Registration Form

Week Preferred: _____

Start Date End Date

Name: _____ Degree (Please circle): M.D. D.O. Other: _____

First M.I. Last

Business Address:

Street: _____

City: _____ State: _____ Zipcode: _____

Country: _____

Daytime Phone: _____ Fax: _____

Hospital Affiliation: _____ City, State: _____

Specialty: _____